



# GAT MONTHLY MEMBERSHIP PROGRESS REPORT

Results as of: 5/31/2022

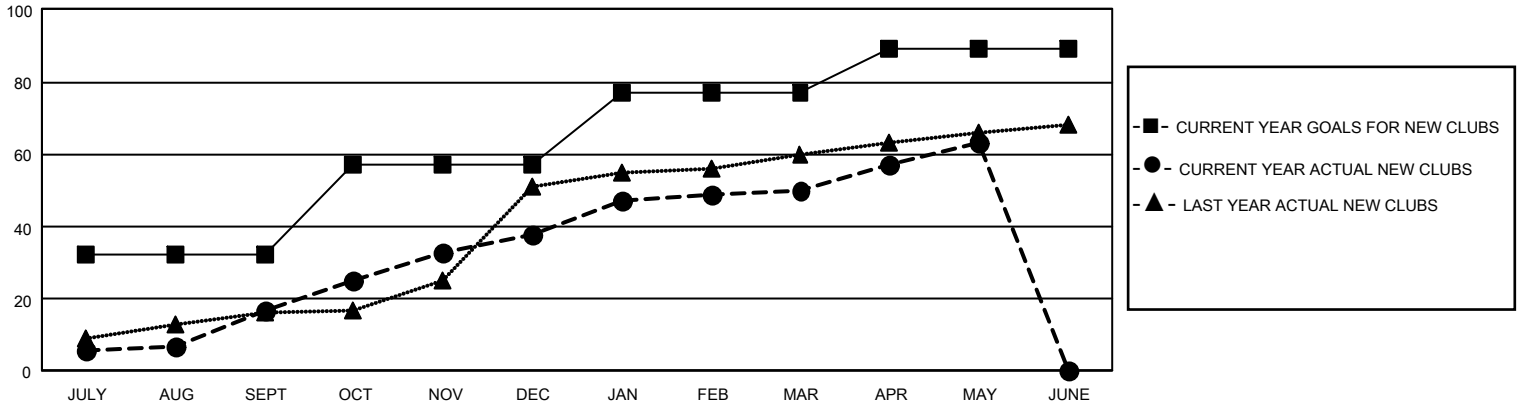
## GMT Constitutional Area 6, Group H

REPORT DOES NOT INCLUDE CLUBS IN UNDISTRICTED AREAS.

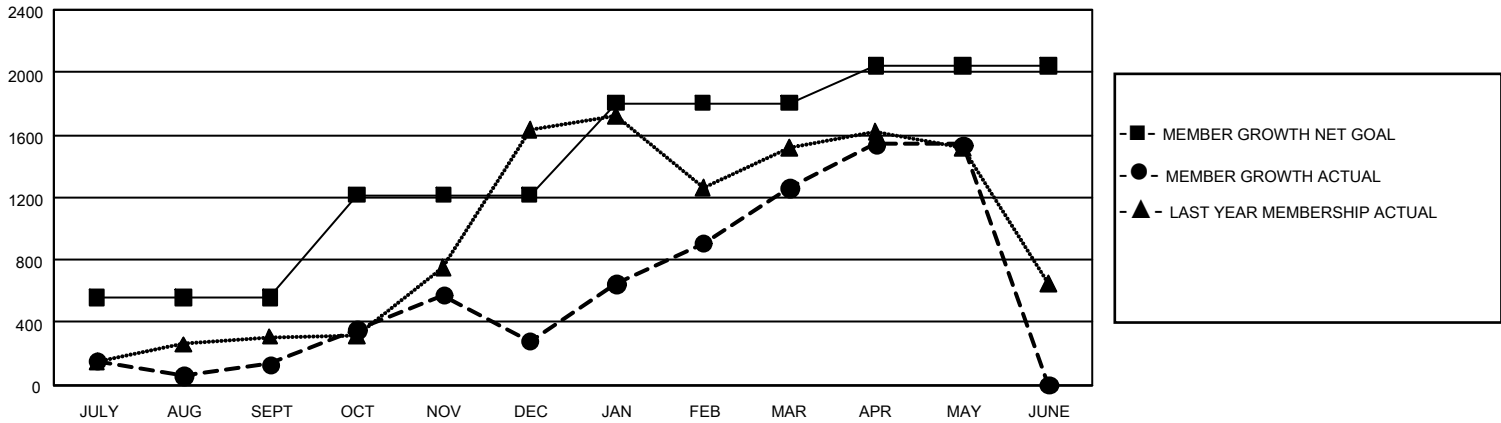
Clubs			
RESULTS FOR 2021-2022			
QUARTER	NEW CLUB GOAL	NEW CLUBS	DROPPED CLUBS
JULY/AUG/SEPT	96	17	21
OCT/NOV/DEC	75	21	13
JAN/FEB/MAR	60	12	5
APR/MAY/JUNE	36	13	1

Members			
RESULTS FOR 2021-2022			
QUARTER	MEMBER GROWTH NET GOAL	MEMBER GROWTH ACTUAL	DROPPED MEMBERS ACTUAL (including transfers)
JULY/AUG/SEPT	560	864	697
OCT/NOV/DEC	655	1,184	973
JAN/FEB/MAR	590	1,514	384
APR/MAY/JUNE	240	692	365

GOALS AND ACTUAL NEW CLUBS CUMULATIVE



GOALS AND ACTUAL MEMBERS CUMULATIVE



DROPPED CLUBS: 40	464 CLUBS OF 773 ADDED 1 OR MORE NEW MEMBERS	<u>GENDER DISTRIBUTION</u>	
<u>DROPPED MEMBERS</u>		MALE	20,329 (80.27%)
DECEASED	106	FEMALE	4,996 (19.73%)
CLUB CANCELLED	704	NON BINARY	1 (0.00%)
OTHER	1,609	PREFER NOT TO ANSWER	0 (0.00%)
<b>TOTAL</b>	<b>2,419</b>	TOTAL FAMILY UNIT MEMBERS	8,933
	<a href="#">CLICK HERE FOR CUMULATIVE MEMBERSHIP DATA</a>	FAMILY MEMBERS PAYING HALF DUES	4,755